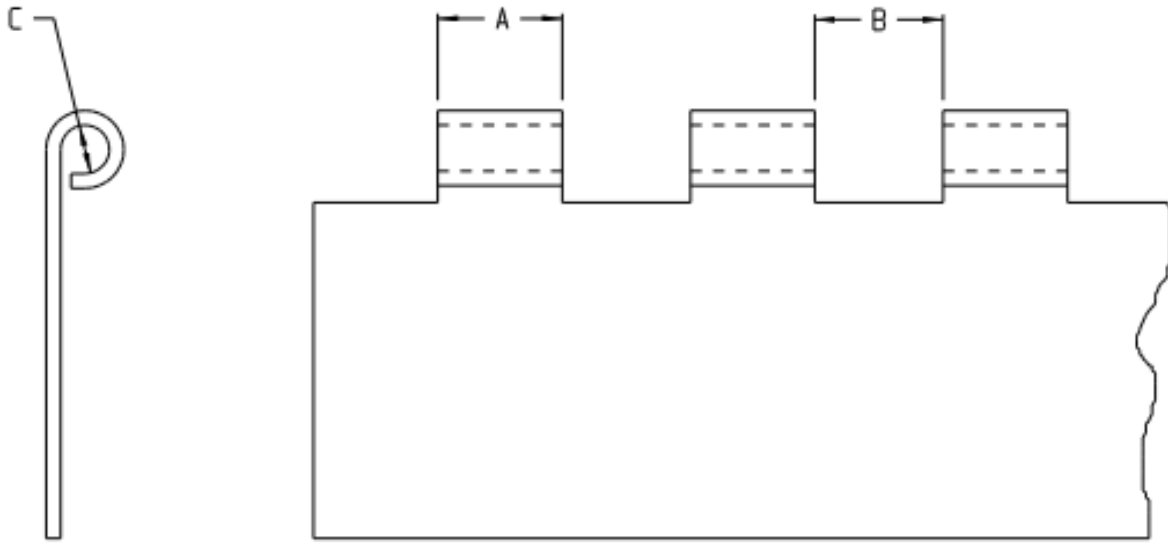


HINGE FORM



KNUCKLE LENGTH "A" _____

KNUCKLE SPACE "B" _____

KNUCKLE I.D. "C" _____

MAT'L TYPE _____

MAT'L THICKNESS "T" _____

MACHINE TYPE _____

TOOLING STATION & STYLE _____

DIMENSIONS FILLED IN BY _____

APPROVED BY _____

TO ASSURE AN ACCURATE FORMED RESULT THE MATERIAL THICKNESS MUST BE SPECIFIED AS AN ACTUAL MEASURED VALUE, NOT A GAUGE SPECIFICATION.

THE KNUCKLE I.D. "C" EQUALS THE PIN DIAMETER PLUS THE DESIRED CLEARANCE.

PLEASE SUBMIT A PART DRAWING IF AVAILABLE.

Contacto:

ventasind@censaindustrial.com

01 800 087-8665



CENSA
INDUSTRIAL

ESPECIFICACIONES DE PEDIDO